

MODEL 9001, 9004 AND 9032 AUTOMATIC DRAIN FILTER SEPARATORS - INSTALLATION AND MAINTENANCE

| Filter | Max. Pressure | Temperature range |
|-------------------------------|-------------------|-------------------|
| Model 9004 (plastic bowl) | 150 psi | 40°F to 125°F |
| Model 9001, 9032 (metal bowl) | 250 psi | 40°F to 200°F |
| w/Auto Drain | 30 psi to 175 psi | 40°F to 120°F |

WARNING! For compressed air service only. Do not use on life support systems or breathing air systems. Never use polycarbonate plastic bowls with air supplied by a compressor lubricated with synthetic oils or oils containing phosphate esters or chlorinated hydrocarbons. They can carry over into the air distribution system and chemically attack and possibly rupture the bowl. On these applications use a metal bowl. Also, do not expose the polycarbonate plastic bowl to materials such as trichloroethylene, acetone or paint thinner. Cleaning fluids or other harmful materials will craze and/or rupture the bowl. If materials harmful to polycarbonate are present either outside or inside the bowl, use a metal bowl. For any additional information regarding chemical compatibility please contact: General Electric Plastics, One Plastic Avenue, Pittsfield, MA.

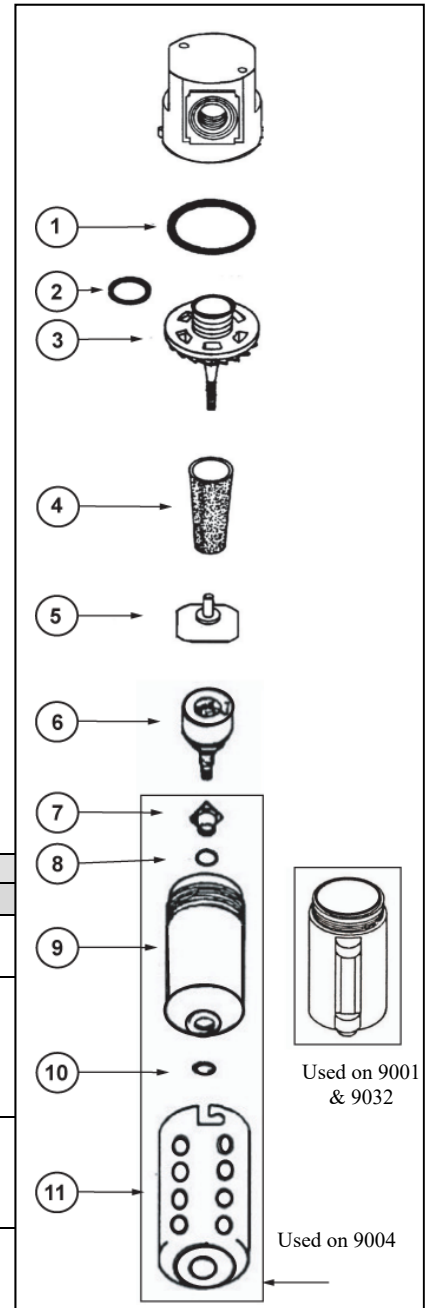
INSTALLATION

Install units so the air flow is in the direction as indicated on the head of the unit. Install filter upstream of regulators and lubricators, and as close as possible to the pneumatic tools or appliances being serviced. Do not install polycarbonate bowl in pressure that exceeds 150 psi or where there is a presence of solvents harmful to polycarbonate. In these cases, use a metal bowl.

MAINTENANCE AND OPERATION

Filtering out of dirt and foreign particles, and the separation of moisture is automatic with air flow. There are no moving parts and no adjustments are necessary. Accumulated sludge and moisture should be drained off. Sediment should not be permitted to fill above the lower baffle.

| Item | Description | Kit Number | | Contents |
|--------------------------------|-------------|------------|--------|--|
| | | 9001&9032 | 9004 | |
| 4 | Element Kit | 900560 | 900631 | 5 Micron Sintered Bronze Element |
| 1, 2, 3, 5, 6, 7, 8, 9, 10, 11 | Rebuild Kit | | 900569 | Bowl O-Ring, O-Ring, Retainer/Vane Assembly, Baffle, Float Drain, Bowl Insert, O-Ring, Plastic Bowl, Retainer Ring, Bowl Guard |
| 1, 2, 3, 5, 6, 9 | Rebuild Kit | 900566 | | Bowl O-Ring, O-Ring, Retainer/Vane Assembly, Baffle, Float Drain, Metal Bowl |



Wash filter element at intervals with naphtha to maintain filtering efficiency. To clean element, depressurize system, unscrew bowl, and unscrew element from head. Dry the filter element thoroughly before reassembling. Clean filter bowl(s) only with soapy water. Inspect O-ring, replacing if damaged or distorted. Reassemble with care to avoid stripping threads on bowl.

For replacement or repair filter and regulator parts, contact EXAIR at 1-800-903-9247 or techhelp@exair.com. Call (513) 671-3322 for outside the US and Canada.

If you have any questions or problems, please contact an EXAIR Application Engineer at:

Toll Free: 1-800-903-9247 (U.S. & Canada)

Telephone: 513 671-3322 outside of U.S. & Canada

Toll Free Fax: 866-329-3924 (U.S. & Canada)

FAX: 513 671-3363 outside of U.S. & Canada

E-mail: techhelp@exair.com

Website: www.exair.com